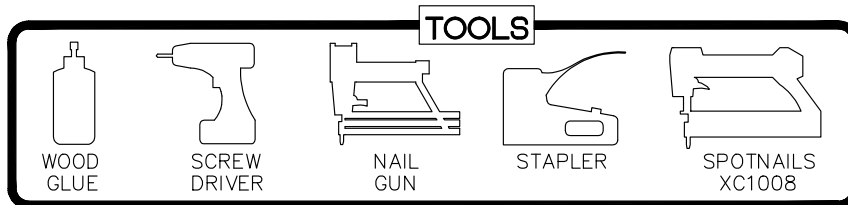
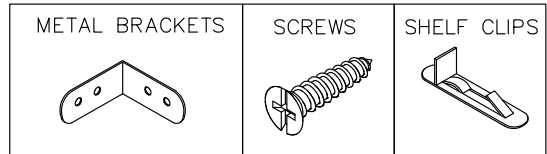
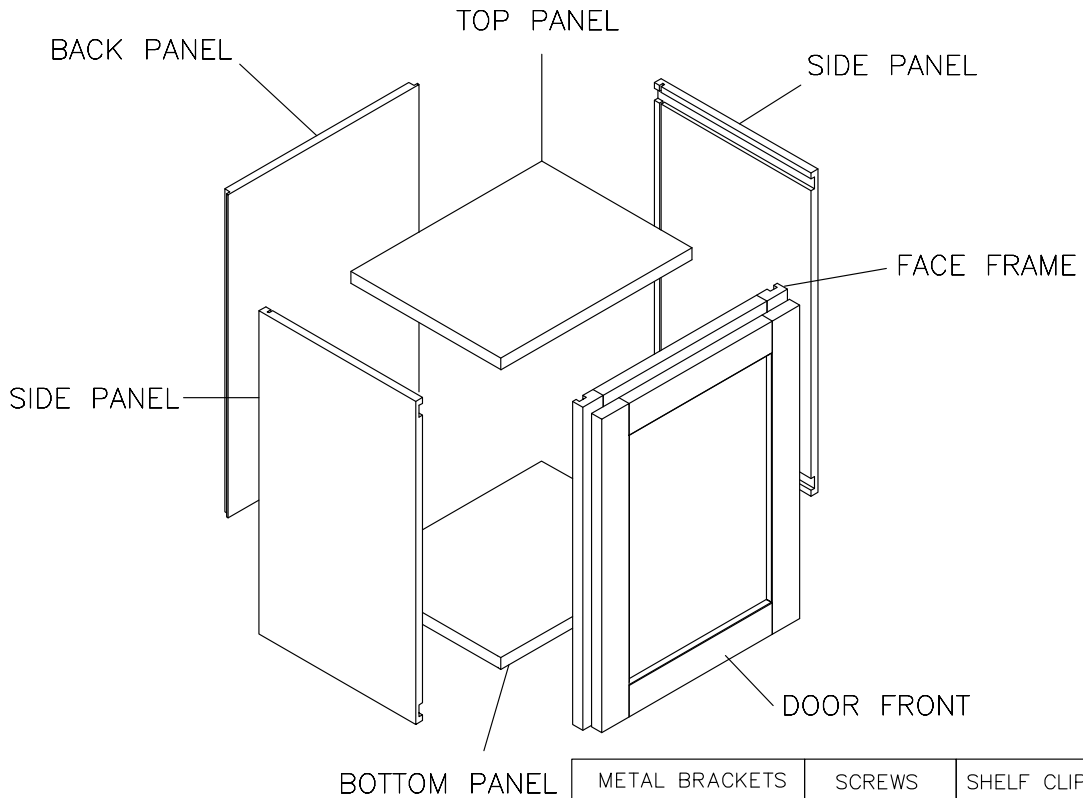




**ASSEMBLY INSTRUCTIONS - WALL CABINET (WITHOUT SHELVES)**



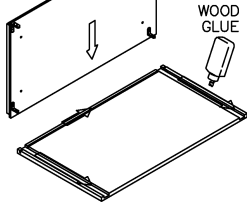
This instruction applies to the following items:

- |                 |                 |                 |             |
|-----------------|-----------------|-----------------|-------------|
| W2412-W2418     | W3012-W3612     | W3015-W3615     | W3018-W3618 |
| W301227-W361227 | W301527-W361527 | W301827-W361827 |             |

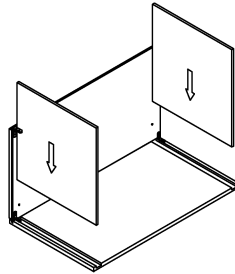


**STEP 1**

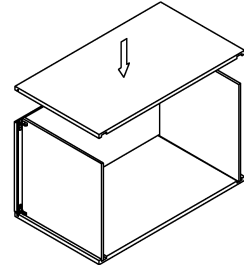
Glue each assembly slot



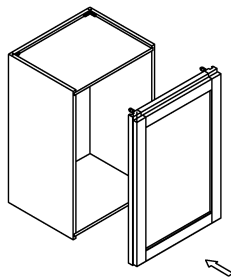
**STEP 2**



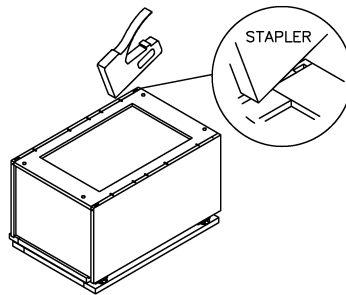
**STEP 3**



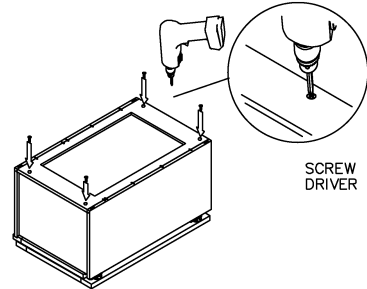
**STEP 4**



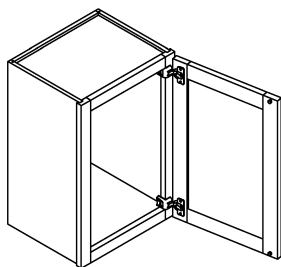
**STEP 5**



**STEP 6**



**STEP 7**



**STEP 8**

Double door installation method is the same as above

